

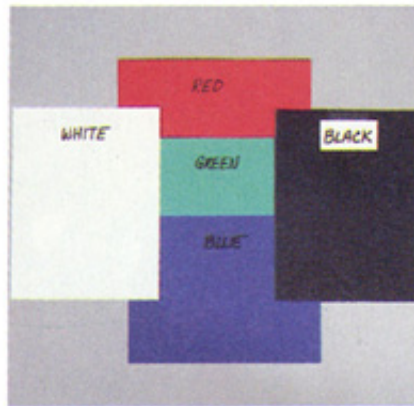
Lab Color

Name _____ Period _____

**** Please Bring a *WHITE LIGHT* Flashlight for this Lab! ****

Procedure:

1. Overlap the red, green, and blue papers as in the data table.
2. Place the white and black pieces on each side (see the data table).
3. Hold red cellophane over the front of a flashlight.
4. Describe in the data table how each color paper appears under the red light.
5. Now use blue cellophane and repeat the above.
6. Now use the green cellophane and repeat.



Paper color	Apparent color of paper		
	With red cellophane	With green cellophane	With blue cellophane
White			
Black			
Red			
Green			
Blue			

Questions (Answer on the back):

1. For each color of paper, list which colors the paper was able to **reflect** and which was **absorbed**.
2. How about the white and black?
3. Discuss color created by the *addition* of the primary colors of light.
4. Discuss color created by the *subtraction* of light by absorbing pigments.
5. **The Grande Critique.**